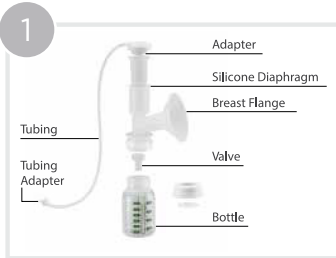


# Ameda Platinum<sup>®</sup> Breast Pump Quick Start

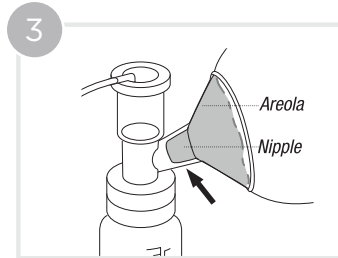
## GETTING STARTED: Always wash your hands before beginning



- If collection kit is marked sterile you can use immediately, (kit is pre assembled).
- If not sterile, clean and assemble the kit (refer to cleaning instructions on page 14).



- Insert tubing adapter.



- Center flange on breast to create seal.
- Refer to finding a good flange fit on page 16.



- Push On button.
- Speed starts automatically at 80 cycles per minute.
- Suction starts at its lowest setting.



To mimic a baby's sucking to start milk flow:

- Push suction button to change level.
- May start at 10% and gradually continue to increase suction to arrive at the highest comfortable level



To mimic a baby's changing pattern to slow, deep draws or sucks:

- Once milk flows:
  - Push speed button down to a slower speed to help drain milk.
  - Try speed 50 cycles per minute Adjust speed as needed to your comfort to drain milk.
- Increase suction but only to highest comfortable suction level.



When milk flow slows, try for another let-down:

- Increase speed back to 80 cycles per minute.
- Once milk flows again, lower speed to help drain milk.