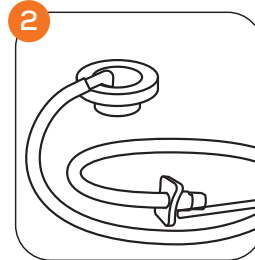
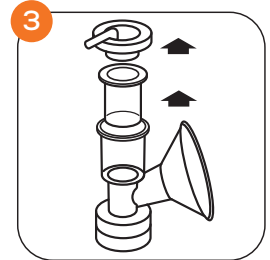


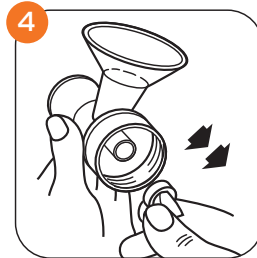
1 Wash before use if kit is unsterile and after each use.



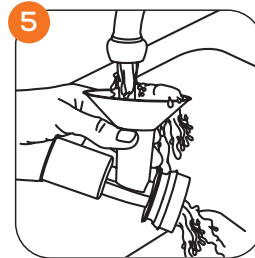
2 \*Important Do Not Wash (1) Tubing Adapter, (2) Silicone Tubing, and (3) Adapter Cap.



3 Disassemble parts.



4 Grasp valve by thick sides.



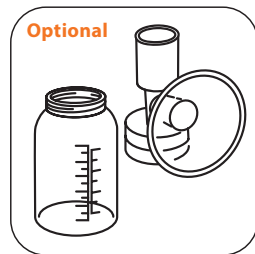
5 Rinse with cool, clean water.



6 Wash the parts with warm, soapy water. Do not insert anything into valve while cleaning.



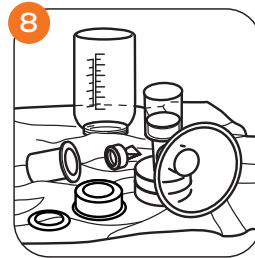
Optional  
Boil to sanitize



Optional  
Wash larger pieces in upper rack of dishwasher.



7 Rinse with warm, clean water.



8 Air Dry.

**\*Important Do Not Wash**  
1. Tubing Adapter  
2. Silicone Tubing  
3. Adapter Cap

These parts Do Not need to be washed before first use or after each use - milk does not come into contact with these parts while pumping.